

# Automatic Drifting Laser VL-80

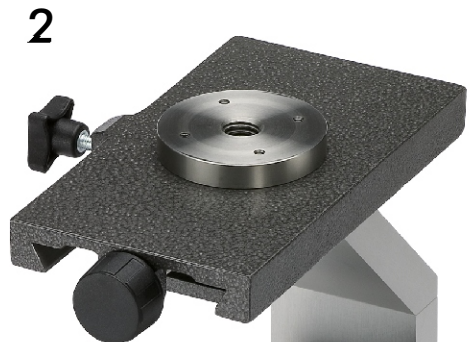
Fixing the line - locked on target !

## System components

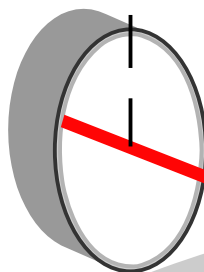
- 1 FE-80 Locking receiver
- 2 PH-80 Positioning device
- 3 VL-80 Drifting laser
- 4 VF-80 Remote control



Locking beam



3



Target beam

4



# Automatic Drifting Laser VL-80

## Target-orientated, locked

### ● The VL-80

is an exceptional laser. It was specifically designed for pipe driving, but can also be used for a variety of other purposes. It emits an automatically levelled or defined inclined target beam and a second beam for direction locking.

### ● Fully automatic

Automatic levelling, inclination zeroing, direction centring and cut-out in case of low battery or jerky movement.

### ● Advantageous diode laser beam

Low power consumption with high life expectancy. Target beam laser power adjustable in five steps from 1 to < 5 mW for various requirements. Locking beam with automatic power optimisation.

### ● Increased safety

Control indicators with blinking warning system for levelling, direction locking, low battery and end positions.

Shift guard for inclination and direction setting.

The values that have been set remain stored in the laser even after switching off or in the case of a low battery.

The name of the owner can be saved in the device to protect against theft.

### ● Brightly illuminated, clearly legible LCD display

Self-explanatory, for on/off, device data, company data, lock function, inclination, algebraic sign, unit % or ‰, centring, direction limitation, operating status and menu.

### ● Easy-to-use keyboard

Clear layout, big, user-friendly, self-explanatory keys.

### ● Robust metal housing

Anodised, plastic-coated, filled with nitrogen, 100 % watertight.

### ● Flexible power supply

12 V/DC = Energy box EB-12/24K or 12 V rechargeable battery  
230 V/AC = Power supply NE-12/2A or other 12 V/DC power sources

### ● Perfected design

Excellent handling, high functionality and reliable operation.

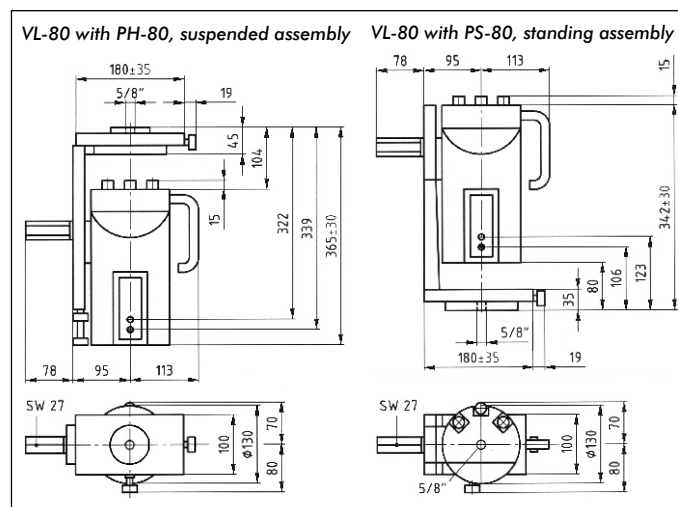
## Technical specifications

Locking beam: . . . . . class 2, < 1mW, red 635 nm  
Locking beam Ø: . . . . . 5 mm at laser, approx. 13 mm in 15 m  
Target beam: . . . . . class 3R, < 5 mW, red, 658 nm  
Target beam core Ø: . . . . . 13 mm at laser, + approx. 5.5 mm per 100 m  
Range depending on ambient conditions: . . . . . up to 500 m

Direction setting range: . . . . . ± 5 % (10 m over 100 m)  
Automatic directioning: . . . . . in conjunction with FE-80  
Distance between VL-80 and FE-80: . . . . . 2 to 15 m  
Inclination adjustment range locking beam: . . . . . - 2.5 % to + 110 % (48°)

Inclination adjustment range target beam: . . . . . - 10 % to + 40 %  
Reading accuracy: . . . . . 0.001 %  
Permissible deviation: . . . . . ± 0.005 %  
Adjustment: . . . . . possible without having to open the device

Power supply: . . . . . 10 to 13.8 Volt DC / 0.4 A  
Reverse voltage protection and low battery cut-out: . . . . . yes  
Watertight: . . . . . to 3.5 m  
Temperature range: . . . . . - 20° C to + 50° C  
Weight: . . . . . VL-80 3.1 kg + PH-80 2.2 kg = 5.3 kg  
Guarantee: . . . . . 24 months



## Standard delivery package

P.-No.	Ord.-No.	Type	Description
01	0062.01	PH-80	Positioning device, suspended
02	0001.500	VL-80	Drifting laser
03	0065.06	FE-80	Locking receiver
04	0077.26		Transport case VL-80
05	0026.06	VF-80	Drifting laser remote control
06	0047.00		Battery connector, 2-pole C
07	0031.00		Connection cable, 2.5 m, 2-pole C
08	0074.25		Cable, 20 m, 3-pole C, VL-80 < > FE-80/VF-80
09	0074.25		Cable, 20 m, 3-pole C, VL-80 < > FE-80/VF-80
10	0094.00.1		5/8\"-hexagon head cap screw with nut and washer
1-10	0001.500.1		Standard system VL-80

## Optional accessories

Ord. no.	Type	Description
0071.01	PS-80	Positioning device, standing
0095.00.1		5/8\" threaded spindle with 3 x hexagon nut
0037.09	NE-12/2A	Power supply with connection cable, 2 m
0048.03	EB-12/24K	Energy box, 12 V/24 Ah
0031.36		Connection cable, 10 m, 2-pole



## GEO quality guarantee

The drifting laser VL-80 is the result of years of experience in the research, development and production of laser devices for the construction industry. The construction of the devices, the materials used as well as the GEO quality assurance system guarantee high functionality and life expectancy.

## GEO - partner of the construction industry for 50 years

From:

